



ESSEX NORTH SHORE
AGRICULTURAL & TECHNICAL SCHOOL

2014

Superintendent-Director Mid-Cycle Review

Thursday, January 13, 2022



Overview of SMARTIE Goals

Heidi T. Riccio, Ed.D.
Superintendent-Director



Goal Overview

Professional Practice Goal

Culture-Focused

“I will work with the leadership team, labor unions, unrepresented staff, students, and families toward a positive school culture by June 2022.”

Strategic Plan Alignment:

#2 Culture: Promote a positive and inclusive school culture for all staff and students.



Goal Overview

Student Learning Goal

Content-Focused

“I will work with all stakeholders to provide meaningful career and academic pathways through supporting content-specific skills acquisition, common assessments, and CTE Pathways coursework.”

Strategic Plan Alignment:

1 Pathways: Ensure that the educational experiences provide opportunities for meaningful career and academic pathways.



Goal Overview

District Improvement Goal

Community-Focused

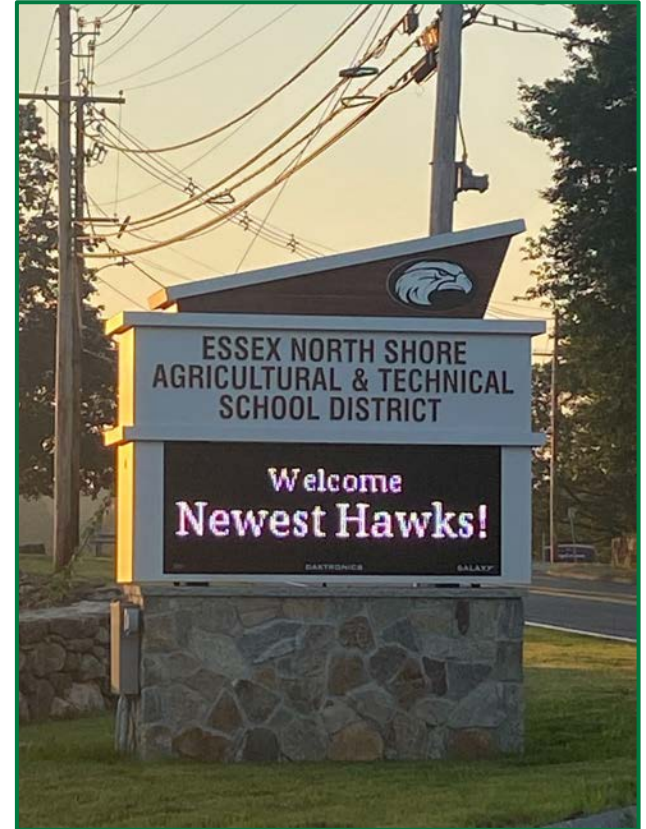
“I will work with all stakeholders to provide meaningful career and academic pathways through supporting content-specific skills acquisition, common assessments, and CTE Pathways coursework.”

Strategic Plan Alignment:

1 Pathways: Ensure that the educational experiences provide opportunities for meaningful career and academic pathways.



Return to School



Culture - PTO



Graduate Profile



Hawks are...

- Kind**
- Tenacious**
- Responsible**
- Collaborative**
- Culturally Proficient**
- Entrepreneurial**



Pathway Classes

GRADE 9 PATHWAY COURSES	
<i>Presentation Skills</i> - Semester	<i>Technology Skills</i> - Semester

GRADE 10 PATHWAY COURSES	
<i>United States Government & Politics</i> - Semester	<i>Financial Literacy</i> - Semester

GRADE 11 PATHWAY COURSES	
AGRICULTURAL CLUSTER - ANIMAL SCIENCES	
<i>Communication and Essential Skills</i> - Semester	<i>Animal Ethics and Agricultural Laws</i> - Semester
AGRICULTURAL CLUSTER - PLANT SCIENCES	
<i>Agricultural Sciences</i> - Full Year	
CONSTRUCTION CLUSTER	
<i>STEM for Construction</i> - Semester	<i>Understanding Specifications and Blueprints</i> - Semester
SERVICES CLUSTER	
<i>Services Leadership I</i> - Full Year	
HEALTH SCIENCES CLUSTER	
<i>Communication for Health Professionals</i> - Semester	<i>Medical Forensics</i> - Semester



Making it Happen



Culture7.co Partnership





Culture- Ice Bucket Challenge



Professional Practice Goal

Culture-Focused

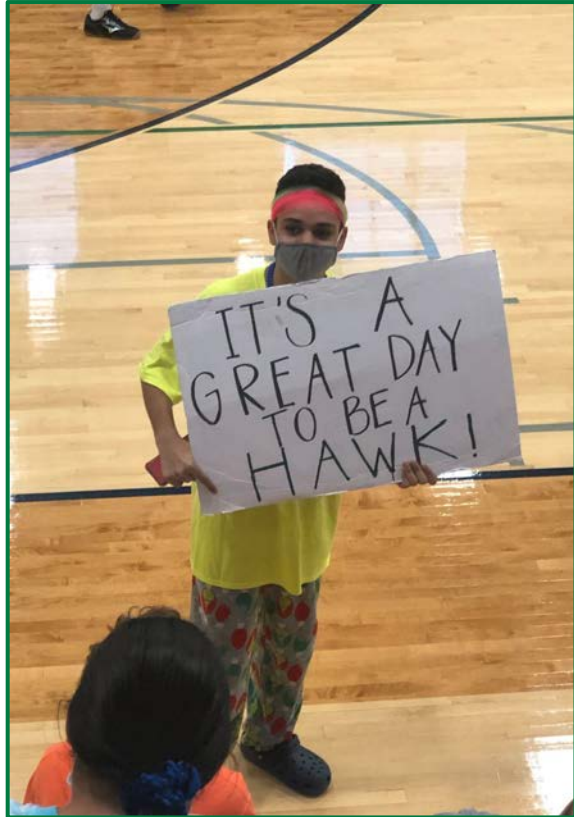
I will work with the leadership team, labor unions, unrepresented (non-union and contractual) staff, students, and families toward a positive school **culture** by June 2022.



Culture - Staff Engagement



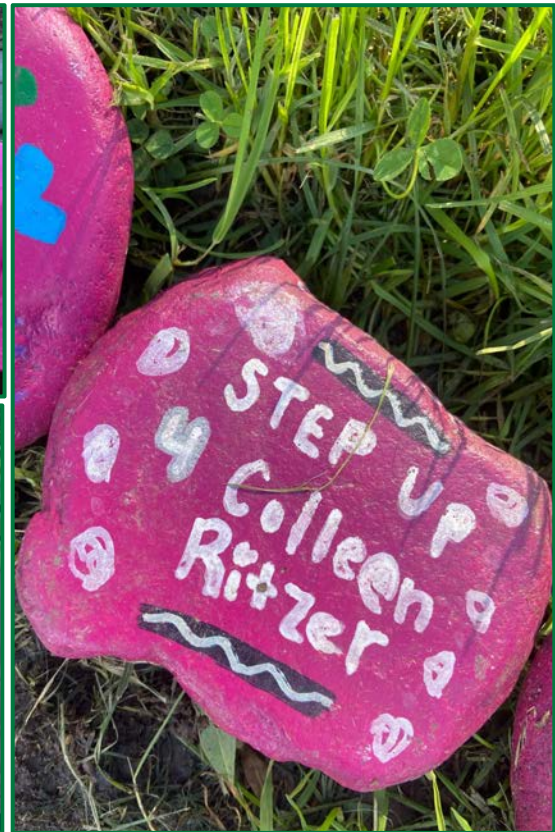
Culture - #RollHawks



Community - Hawk Holiday Hope



Community - Step Up



Community - Homecoming 5K





Frates 5K

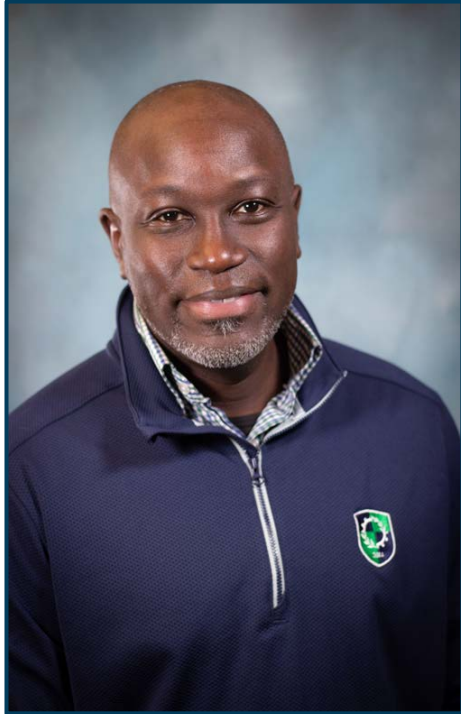
Culture - Pep Rally



Culture - Homecoming



Culture7.co Partnership



Culture - Cultural Proficiency Professional Learning



Culture -
Vital Signs Survey
ETA February 2022



CULTURE 7.CO



sixseconds
THE EMOTIONAL INTELLIGENCE NETWORK



Culture

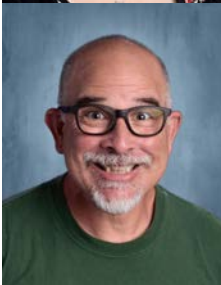
- MASS REDI Planning Committee
- MA DESE Equitable Recruitment PL



Culture - Hiring Oversight



Community - Diversity, Equity, and Inclusion Team



Admissions



National School Safety Advocacy Council Conference



Culture - Student Leaders in Action



Content - Professional Learning Action Team



Staff Enrichment



Staff Enrichment



Building Capacity - Leadership Academy

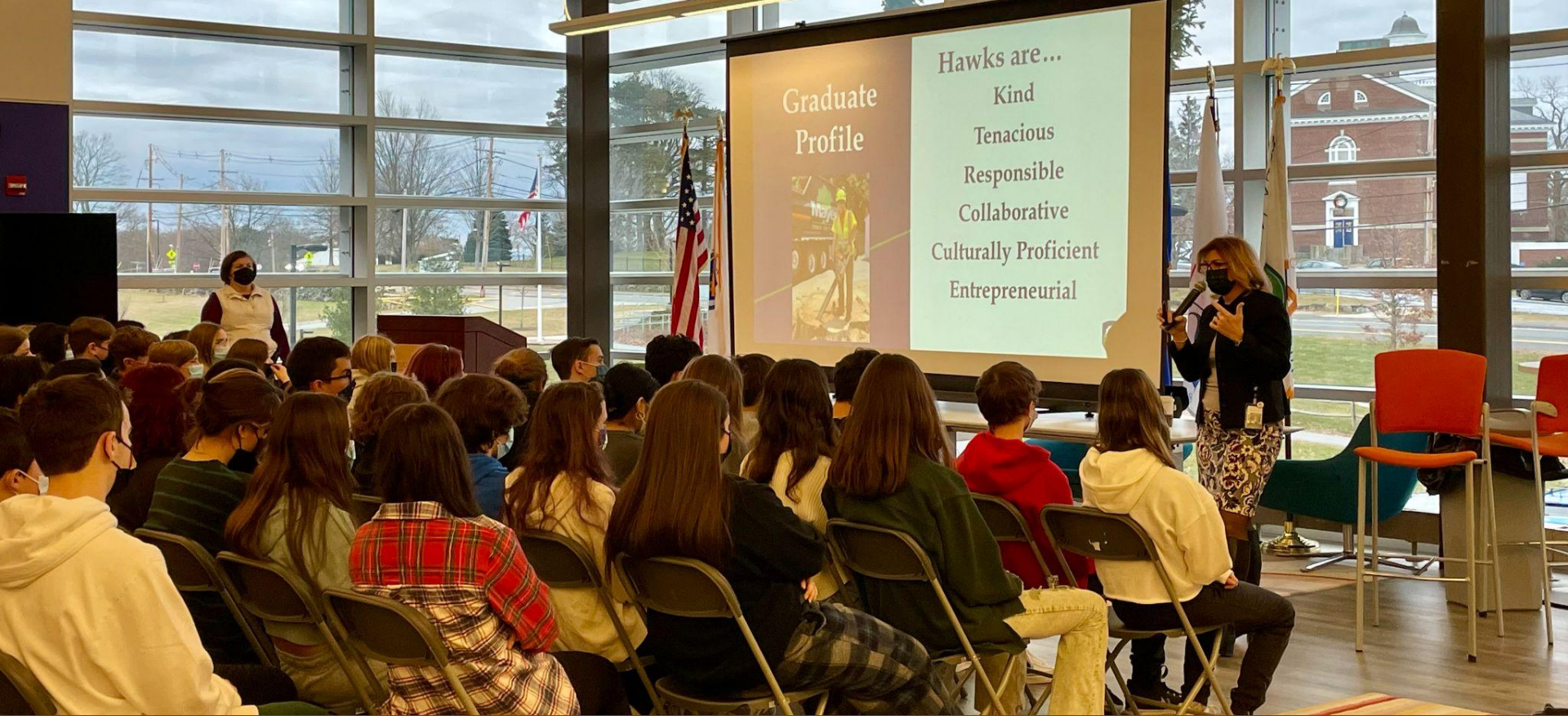


MAVA
Massachusetts Association of
VOCATIONAL ADMINISTRATORS

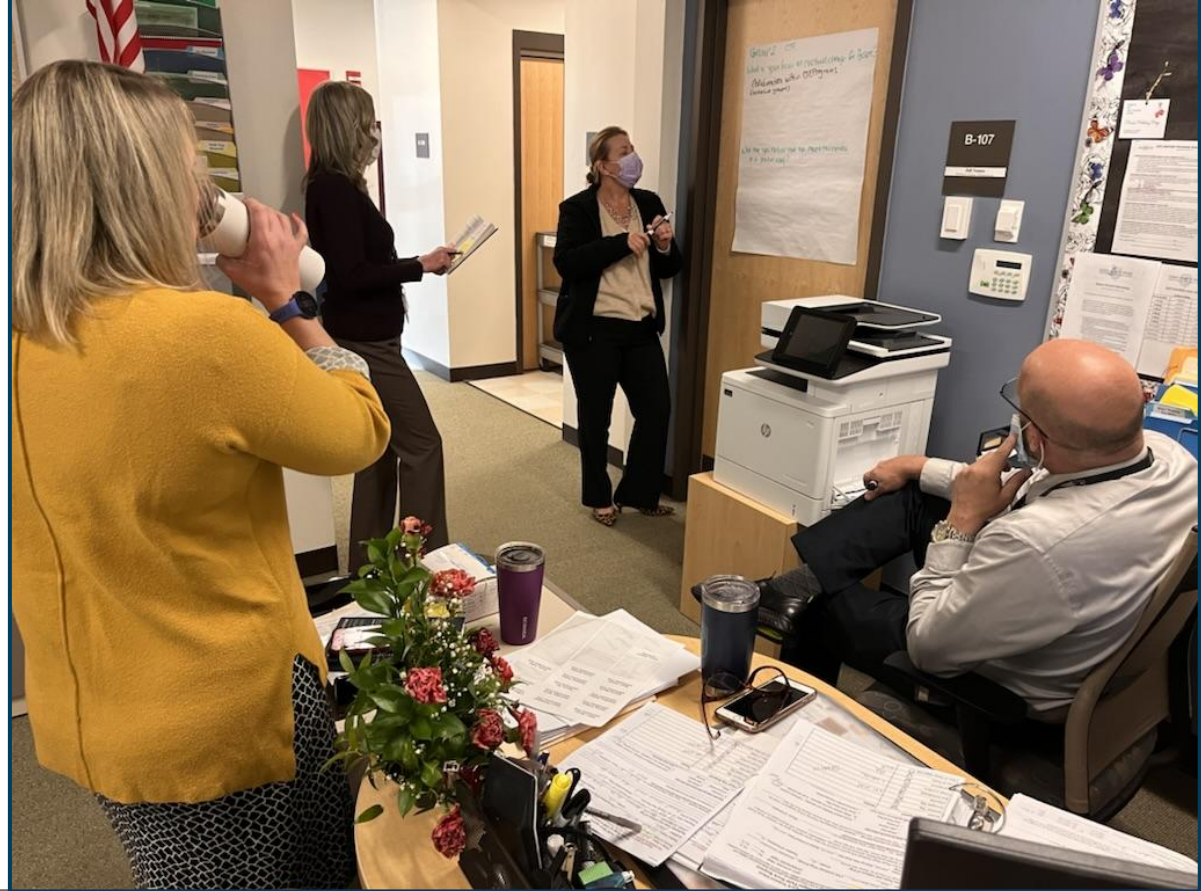
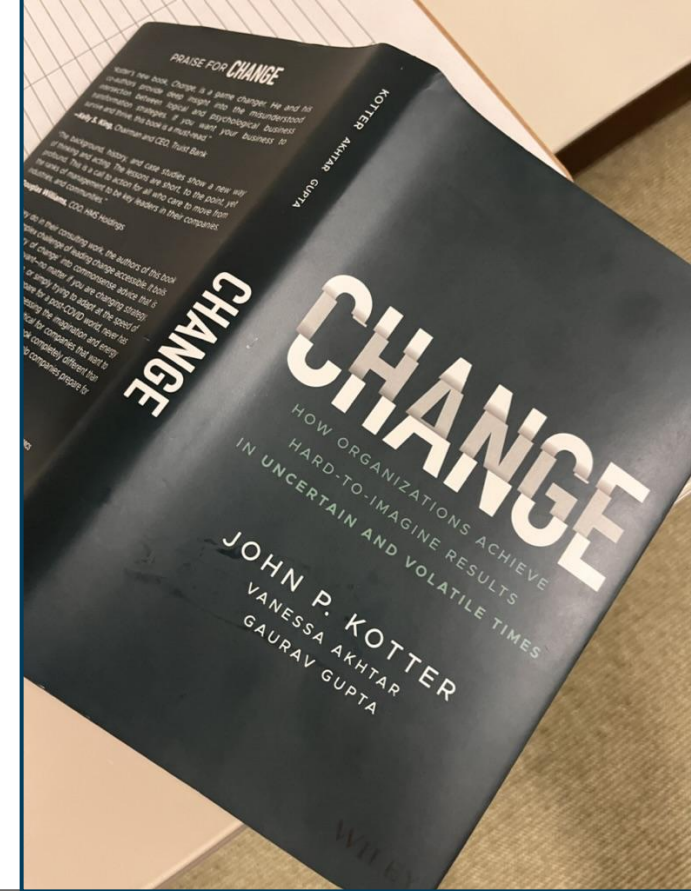


The Skillful Teacher, The Skillful Leader, OSHA Training





Graduate Profile Assemblies



Leadership Team Group Read "Change"

Vaccination Clinics



Student Learning Goal

Content-Focused

I will work with all stakeholders to provide meaningful career and academic pathways through supporting content-specific skills acquisition, common assessments, and CTE Pathways coursework.



CTE Pathway Courses



Grade 9

- Presentation/Technology Skills

Grade 10

- Civics/Financial Literacy

Grade 11 & 12

- Cluster-based Pathway Courses

Early College Courses

Credit for Life Fair



Content - Expand Access - Open House



Content - Expand Access - Open House



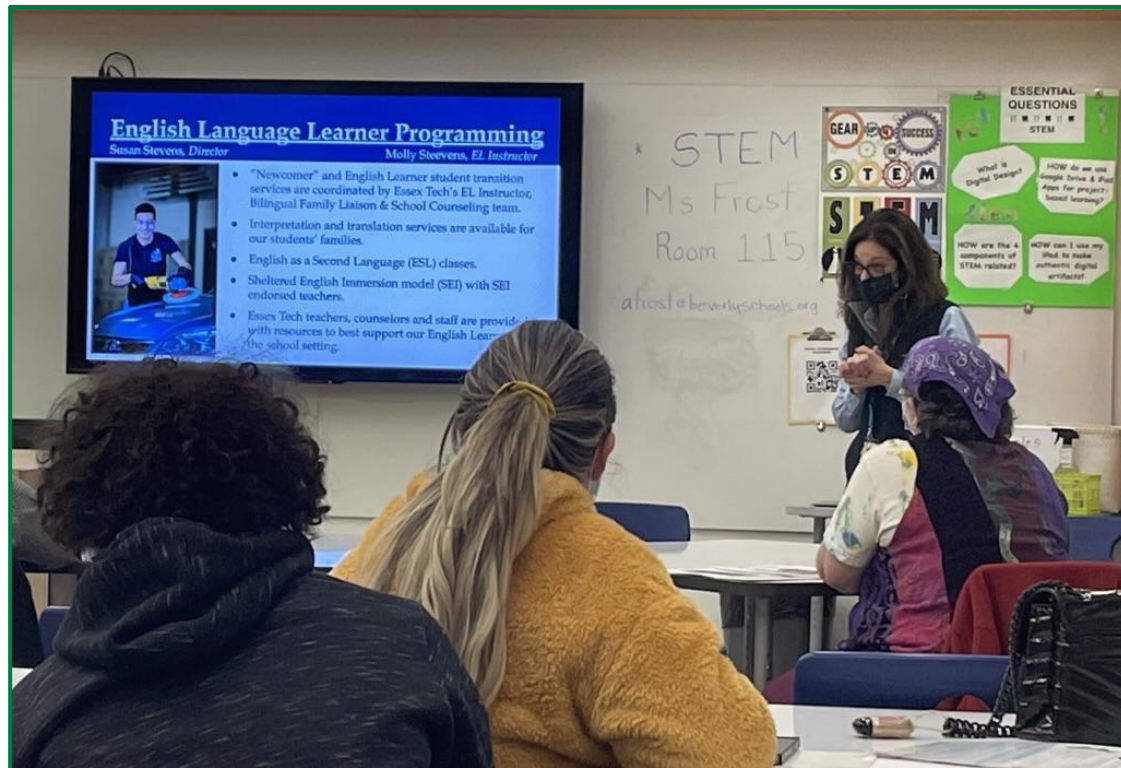
Cooperative Education

Grade 12 - 126

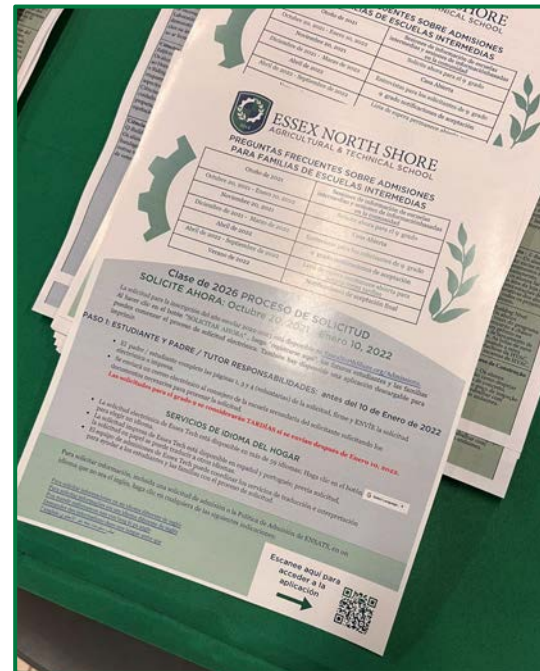
Grade 11 - 22



Community - CVTE Equitable Access



Content - Expand Access



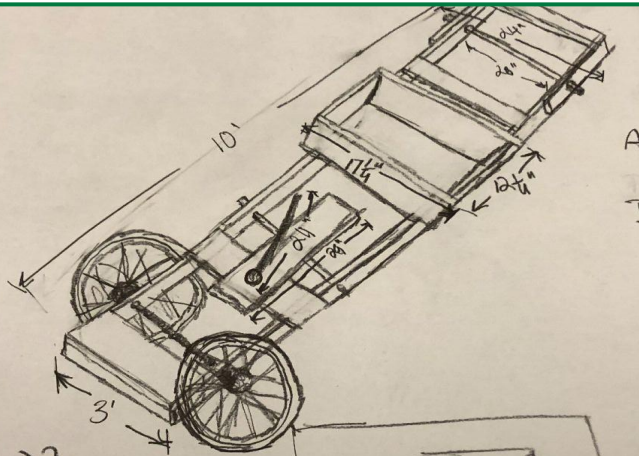
After Dark Partnerships



Integration Learning

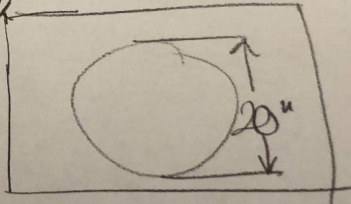


Integration Learning

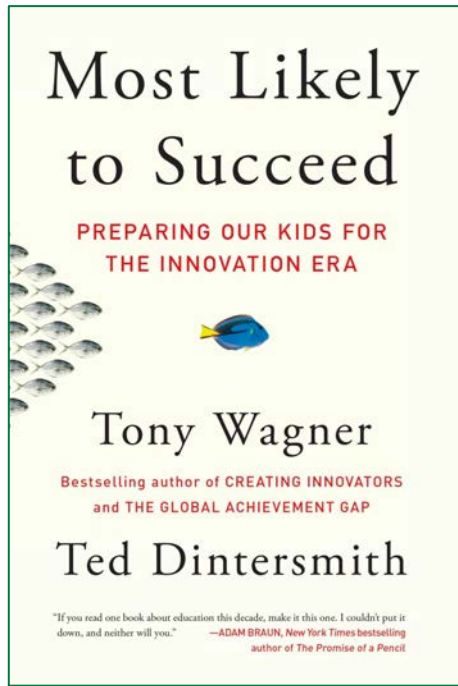
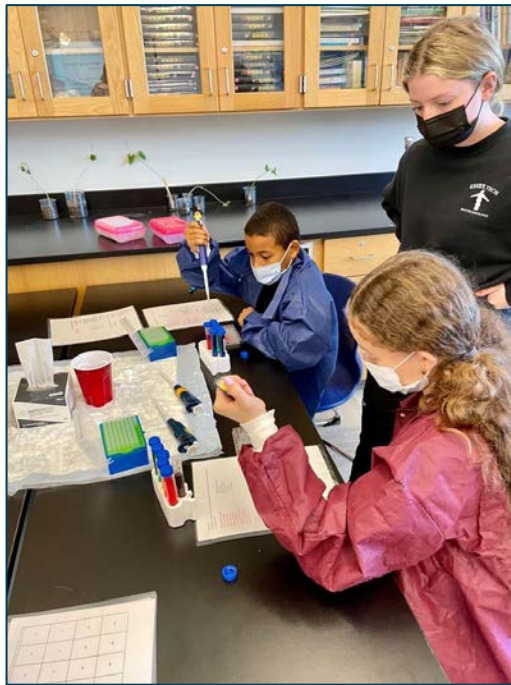


Fórmulas
Area: πr^2
Diameter: $2r$

$$3.14 \times (10)^2 =$$
$$31.4^2 = \boxed{985.96}$$



Community - Deeper Learning



Teacher Common Planning



Dual Enrollment & Early College



Identify Learning Gaps, Performance Matters

Test Analysis

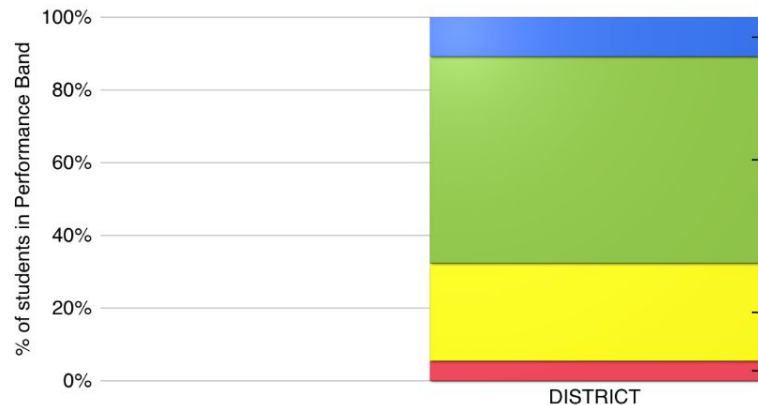
Hist 10 CA Q1 DBQ American Revolution

Go to Student Item Analysis

Attribute	# of Items	% of Students		Average
MA.17.ELA.9-10.W.1	1	4 20 42 8	10.81%	75.68%
MA.18.SOC.9-12.USI.T1.1	1	4 20 42 8	10.81%	75.68%

Standard Question Interactions

Previous 1 Next



Grant Funding to Date

Competitive Grant
Funding - \$2,081,441

Private Donation -
\$340,000

Entitlement Grants -
\$2,271,129



District Improvement Goal

Community-Focused

I will work with staff and the broader school community to promote the mission of our school **community** related to cultural proficiency and inclusive practices that reflect understanding of and respect for staff, students, and families' home languages, culture, and values.



Community - 5-Year Strategic Plan Development

Julie Montague and Amanda Neenan are serving as
5-Year Strategic Planning Committee Co-chairs



Salem Juniper Point Playground Gazebo



Catherine Larkin Memorial Dedication



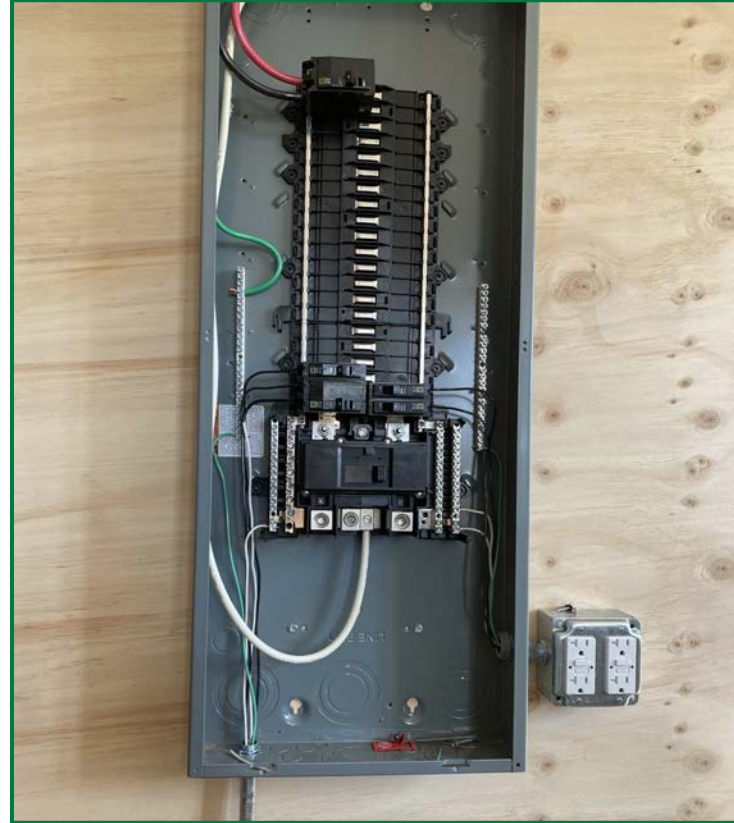
Peabody Police Department



Topsfield Commons



Patton Homestead



Lynch Park-Beverly



Chamber





Wicked Bites

Brunt Work Wear



AGC Externship



City & Town Leadership Tours & Visits



Retiree Luncheon





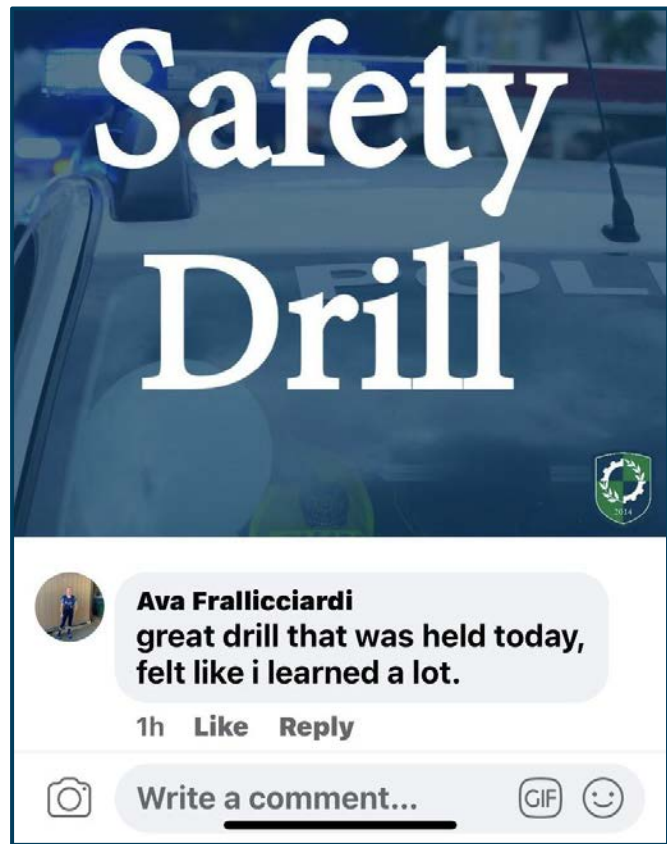
Additional Updates



Safety & Security



Safety & Security



Technology Department



Performance Matters



Smith Hall



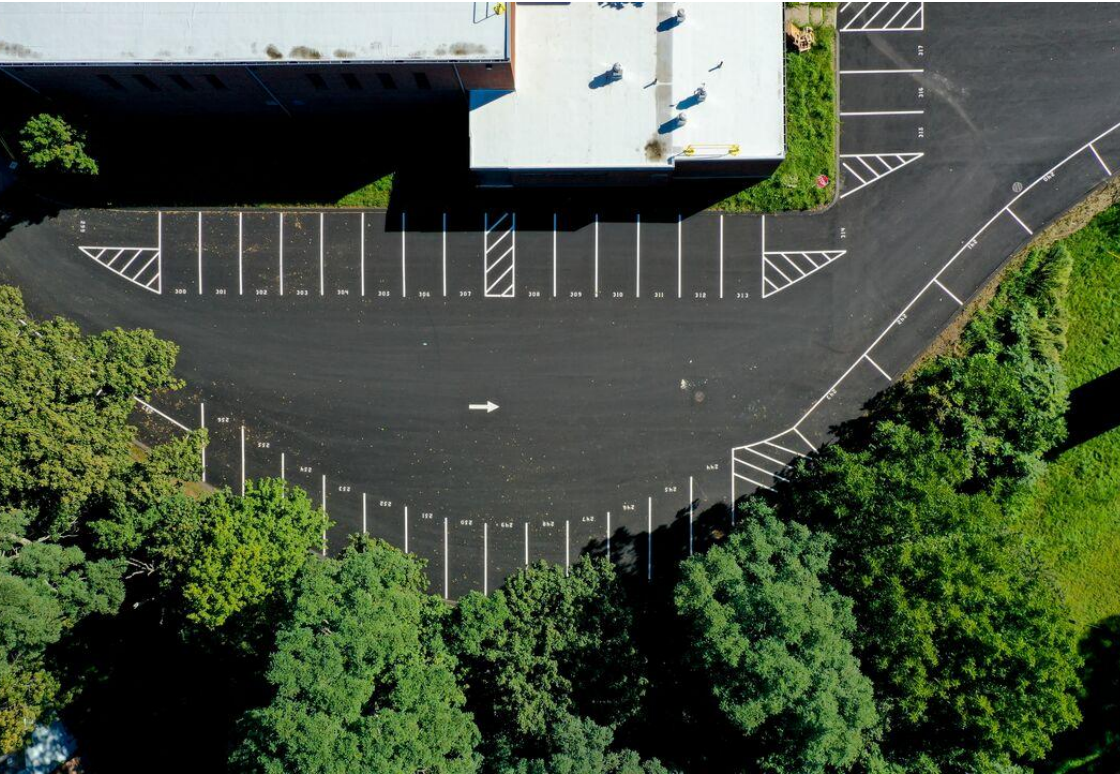


Gallant Hall

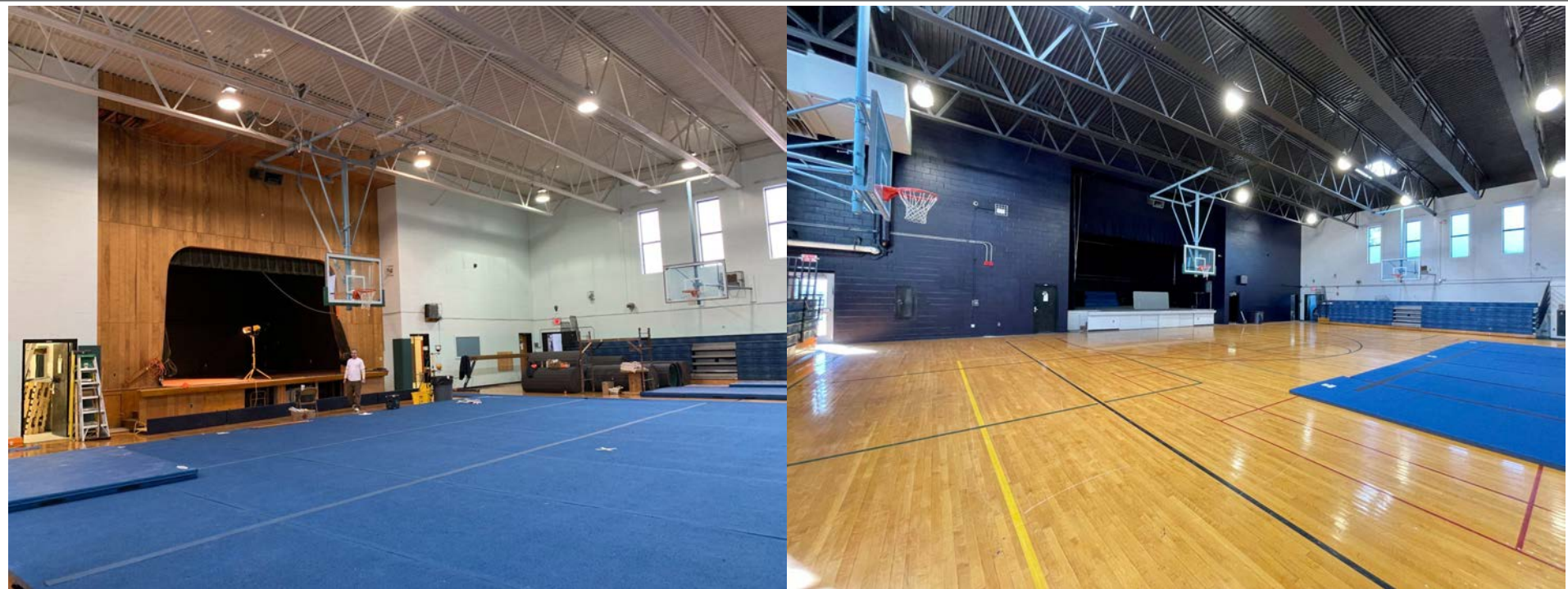
Campus Paving



Campus Paving



Alumni Gym



Classroom Painting



Dust Collection System



Transportation Office



Eatery at Essex



Cosmetology Renovations



Media Center



Larkin Cottage



Recognitions and Representations



FFA National Convention

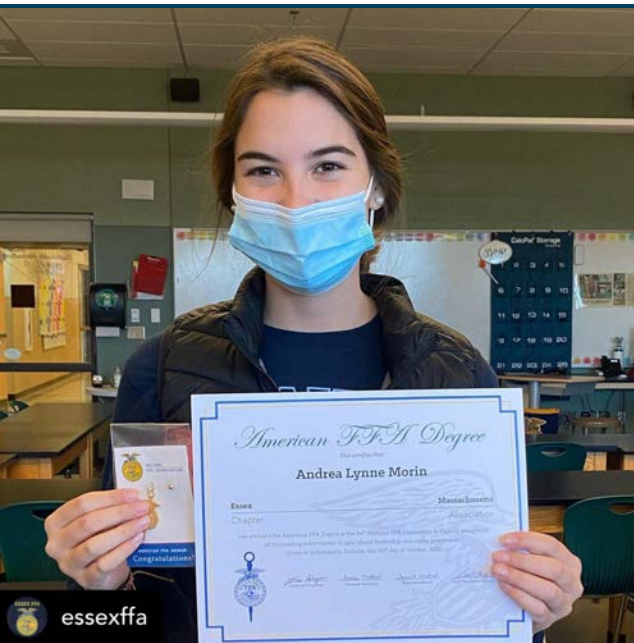


FFA National Convention

Natural & Environmental Science students earned the Silver Team Medal in Environmental and Natural Resources.



American FFA Degree






SkillsUSA®

SkillsUSA



DECA District Competition

U.S. Presidential Scholar in Career and Technical Education Nominee

Beck Hermann



National ESEA Distinguished School



Board Involvement



MAVA Massachusetts Association of
VOCATIONAL ADMINISTRATORS

The
CHAMBER.

North Shore Chamber of Commerce



THE MASSACHUSETTS
PARTNERSHIPS
FOR YOUTH INC.



SkillsUSA
MASSACHUSETTS



MASSHIRE



Our Mission

The mission of Essex North Shore Agricultural & Technical School is to create a **culture of academic and technical excellence**, encourage continuous intellectual growth, and promote professionalism, determination, and citizenship for all students, as they develop into architects, artisans, and authors of the 21st-century.



Graduate Profile



Hawks are...

Kind

Tenacious

Responsible

Collaborative

Culturally Proficient

Entrepreneurial





ESSEX NORTH SHORE
AGRICULTURAL & TECHNICAL SCHOOL

2014

Superintendent-Director Mid-Cycle Review

Thursday, January 13, 2022

